

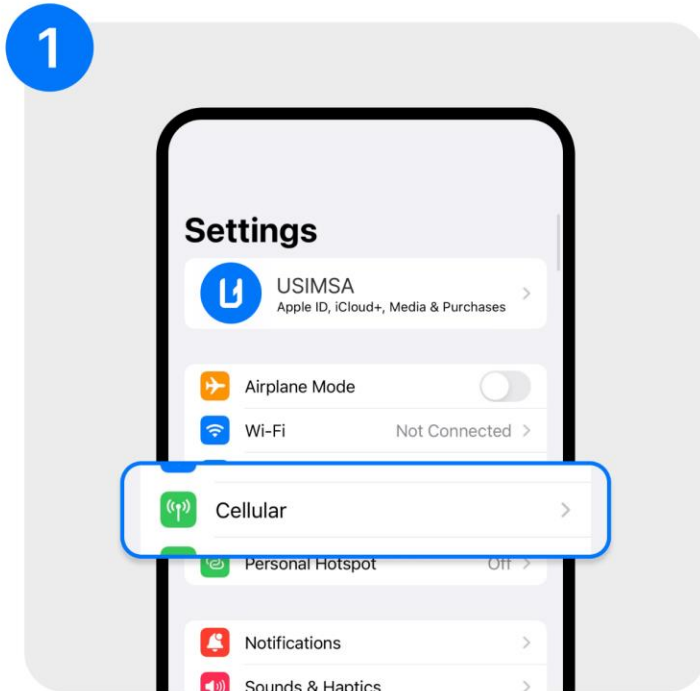
iOS

• 16 ver ~

01 / 08

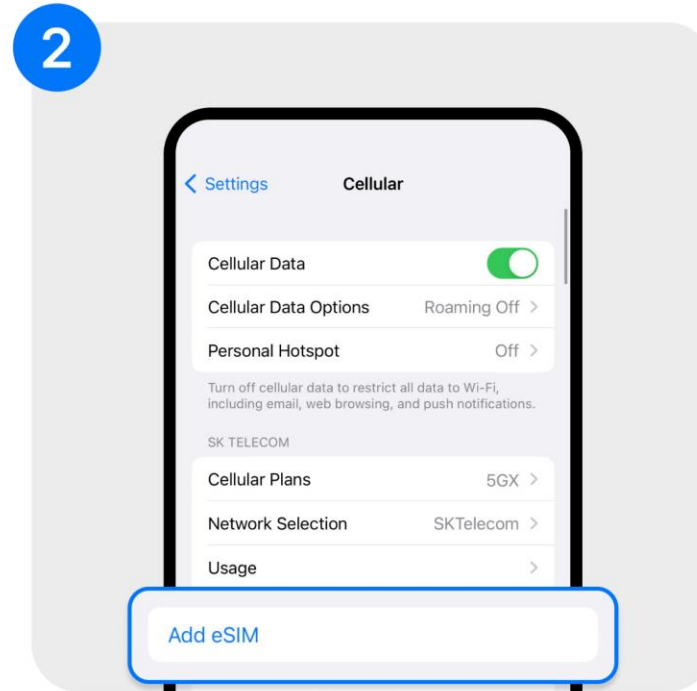
How to login eSIM

- How do I scan to login eSIM



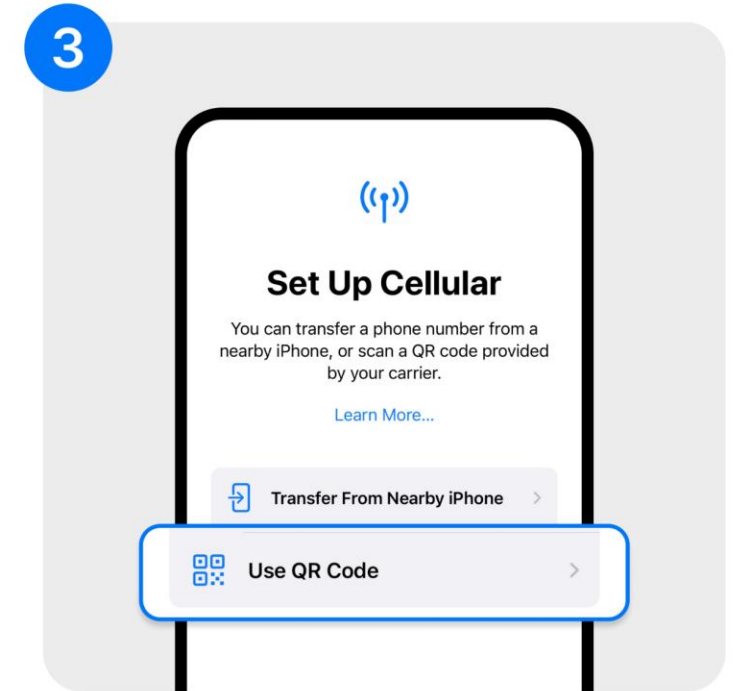
1. Setting → Click on the **Cellular** button

or click on the **Mobile Data** button




2. Click on **Add eSIM** button below.

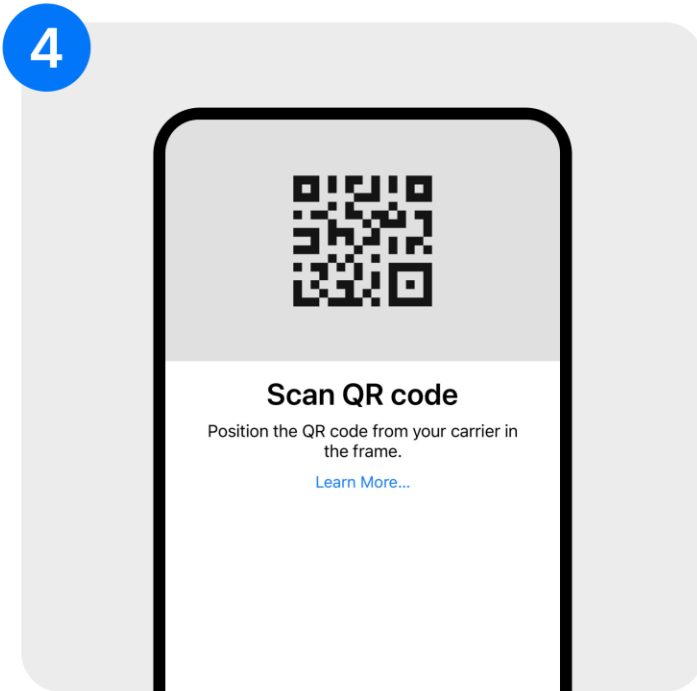
or click on the **Add eSIM Cellular Plan** button



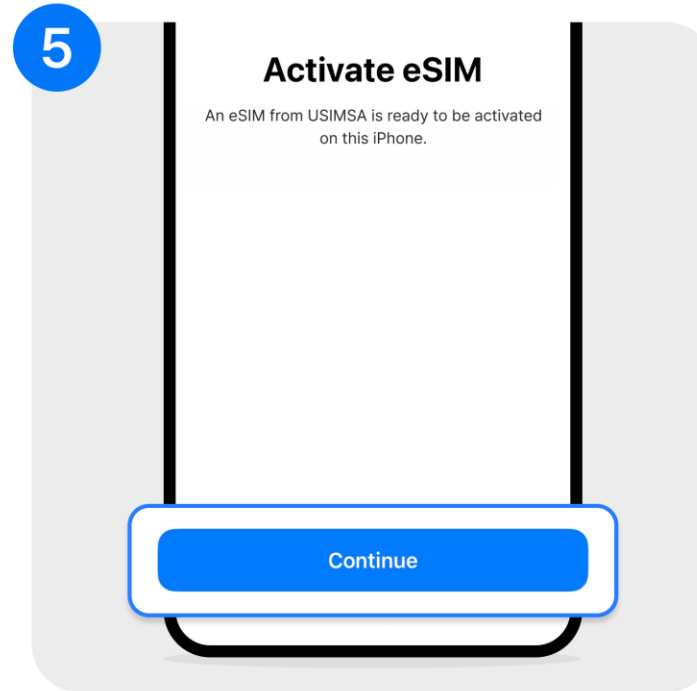
3. Click **Use QR Code**

 **If the screen above is different from the screen number three,** it will appear when you upgrade to iOS 16.ver. If not, it is still possible to use. However, it is recommended to upgrade to the latest version of iOS.

- How do I scan to login eSIM



4. Scan [QR code](#)



5. Click the [Continue](#) button

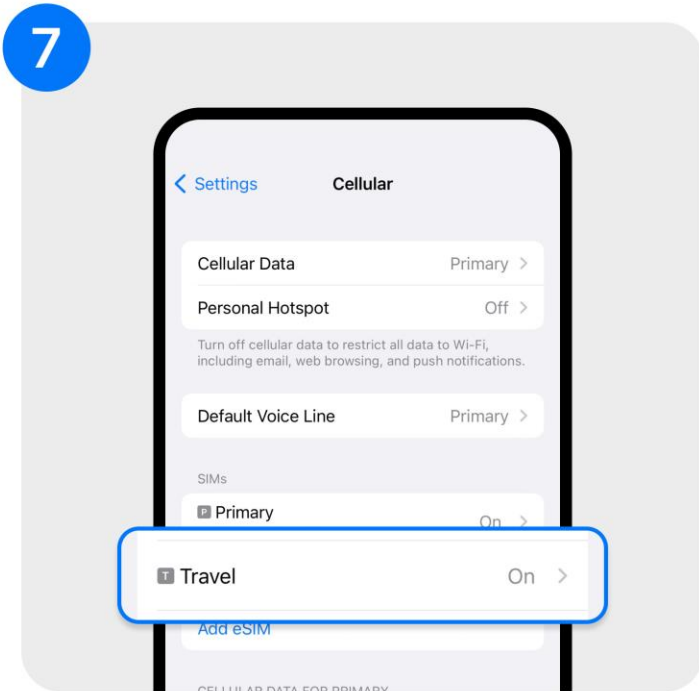


6. Click the [Done](#) button

⚠ If it's hard to scan QR codes?

Click at the bottom of the relevant screen to [manual input](#).
Please go to [page 6](#) for manual input instructions.

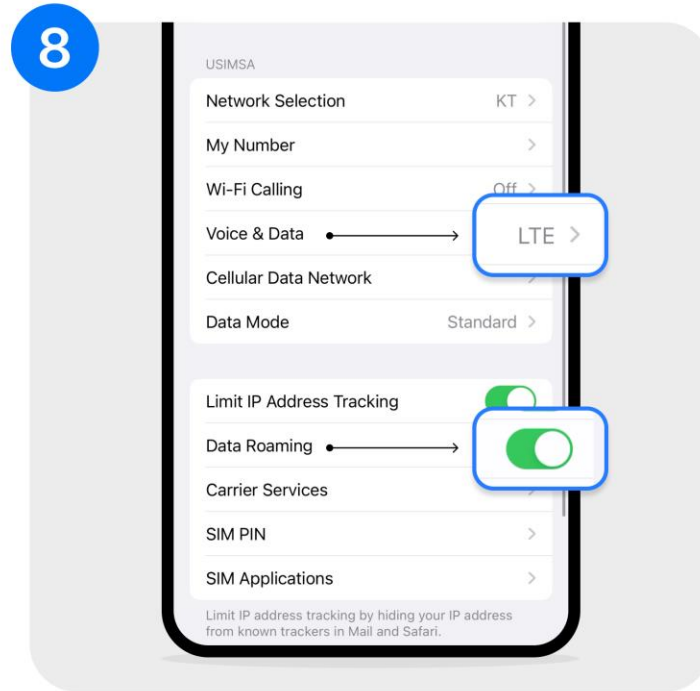
- How do I scan to login eSIM



7. Click the eSIM that you added

😞 If the SIM name is different from Travel?

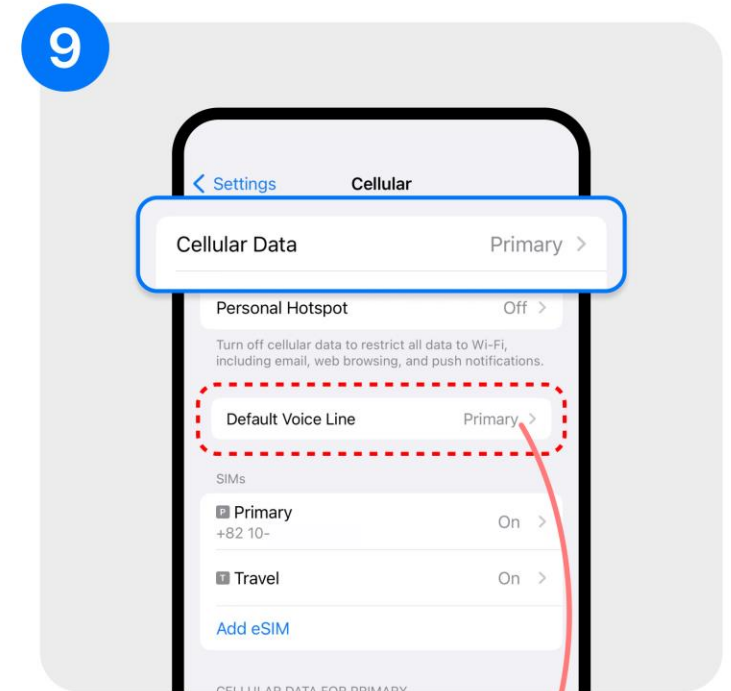
Don't worry!
For the add eSIM, you could change the name arbitrarily.
ex) For business, travel, assistance, etc.



8. After turning the data roaming → Return

📶 Please change to LTE or 4G!

If it's 5G on the voice and data button show on the screen, please make sure to change to use 4G or LTE!
The data will go better when you change!

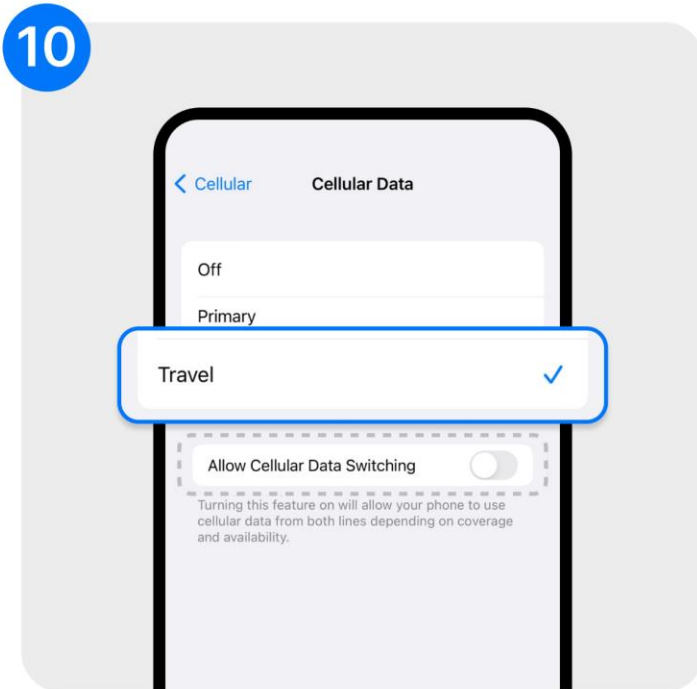


9. Click the Cellular Data

📞 How do I check the call /text message from my home country?

Please set the default voice line to primary, and you could check the call or text message from your country. However, there may be charges for receiving and sending letters. So please do! Use the data phone (Facebook, Facetime etc.) to contact your friends!

- How do I scan to login eSIM

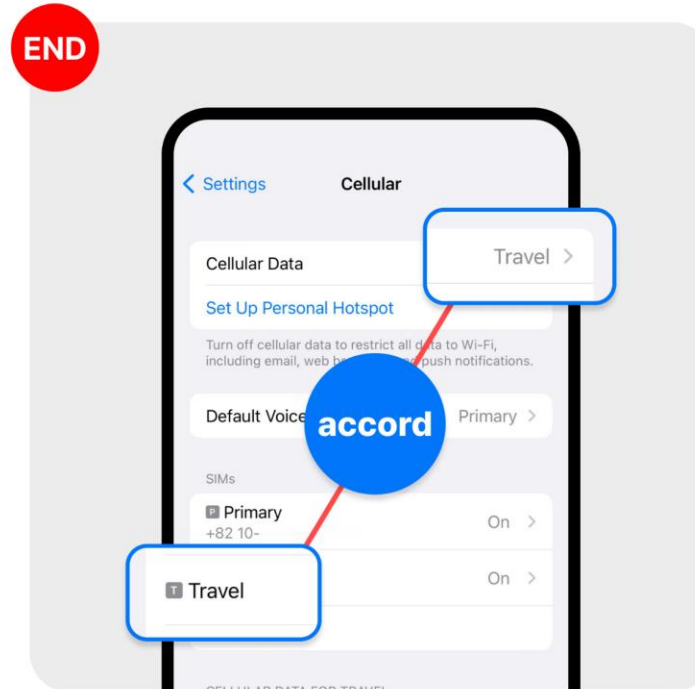


10. Click the eSIM that you added → Return



Why is it necessary to set Allow Cellular Data Switching to OFF?

Allow Cellular Data Switching must be set to OFF so that could avoid using the network of the SIM (telecommunications company) and incurring additional data charges.



11. Confirm the consistency between the eSIM and Cellular Data



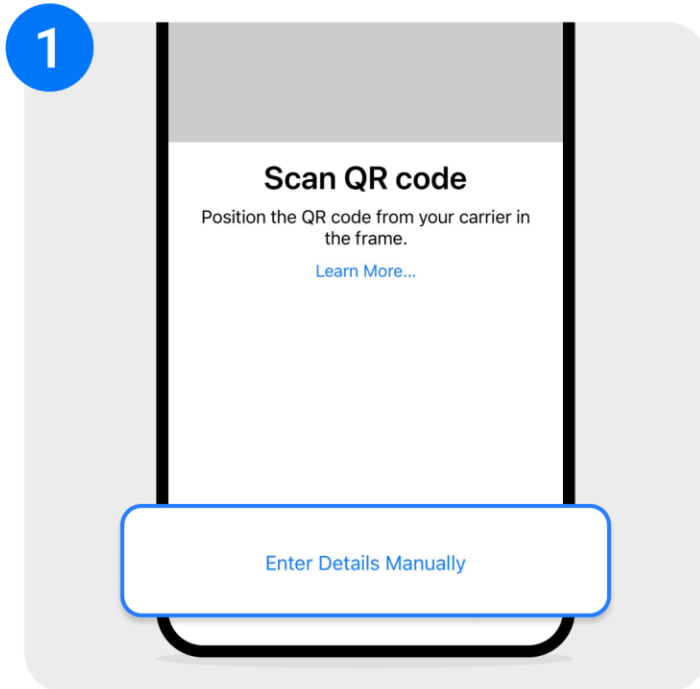
eSIM setting is finished!

Now enjoy your travel!

- How to login eSIM manually

How to login eSIM manually

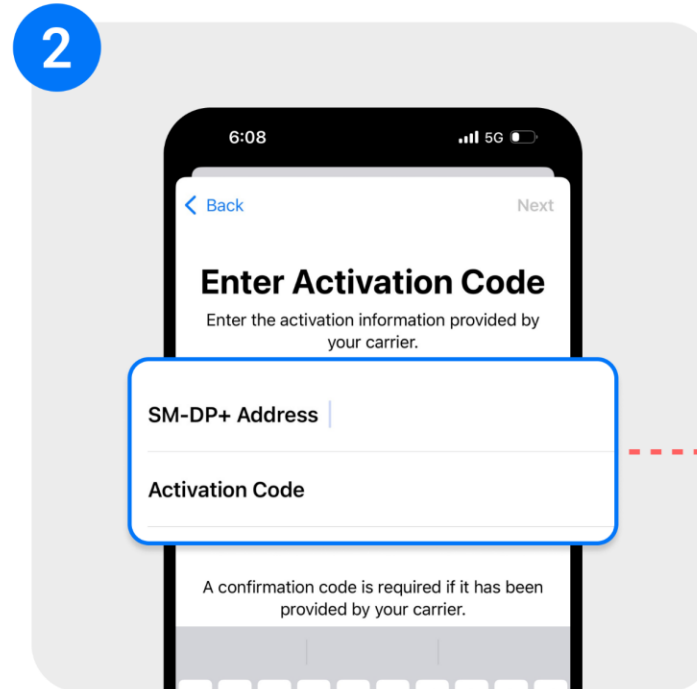
- How to login eSIM manually



1. Click the **Enter Details Manually**

Wait! Where could i find the screen above?

Click **Setting** → **Cellular or Mobile Data** → **Add eSIM or Add eSIM Cellular Plan** → **Use QR code**, the screen would appear



2. Input the **SM-DP+ Address** and **Activation Code**

Where is the code?

The SM-DP+ Address and Activation Code are **below the QR code in the mail voucher** you received. Please **copy the SM-DP+ Address** and **Activation Code** and input them.

The manual login method is shown below!

A diagram showing a red dashed arrow pointing from the highlighted input fields in the previous screenshot to a box containing the final activation details. The box contains: 'SM-DP+ Address `ecprsp.eastcompeace.com`' and 'Activation Code `279096152E4D481DB9A38`
`27536E33D95`'.

Just copy the top enable code and click the button below.
Manual connection is completed!

**If that still doesn't work.
What should I do? 🥲**

Don't worry!

Please check [the bottom of the email voucher you received!](#)

[PDF of obstacles coping measures!](#)

If this doesn't work, please contact USIMSA [24-hour customer service.](#)