

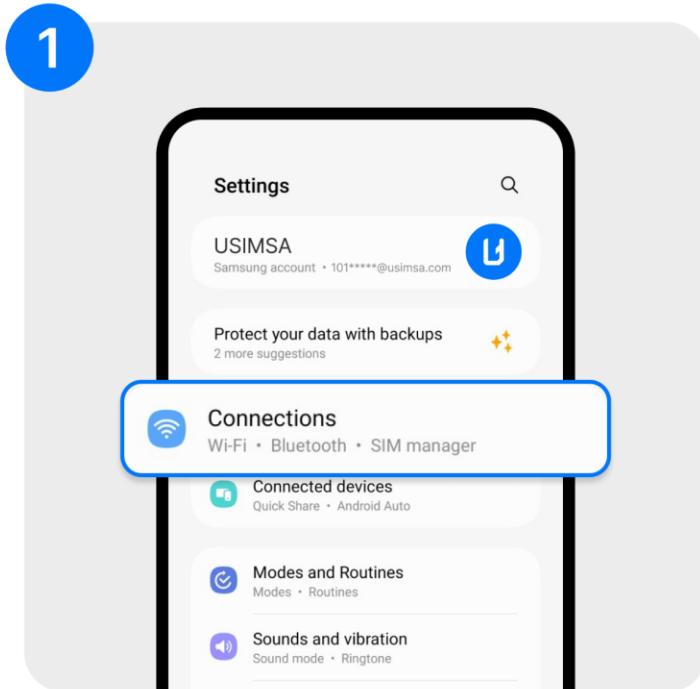
Android

- 13 ver (New)

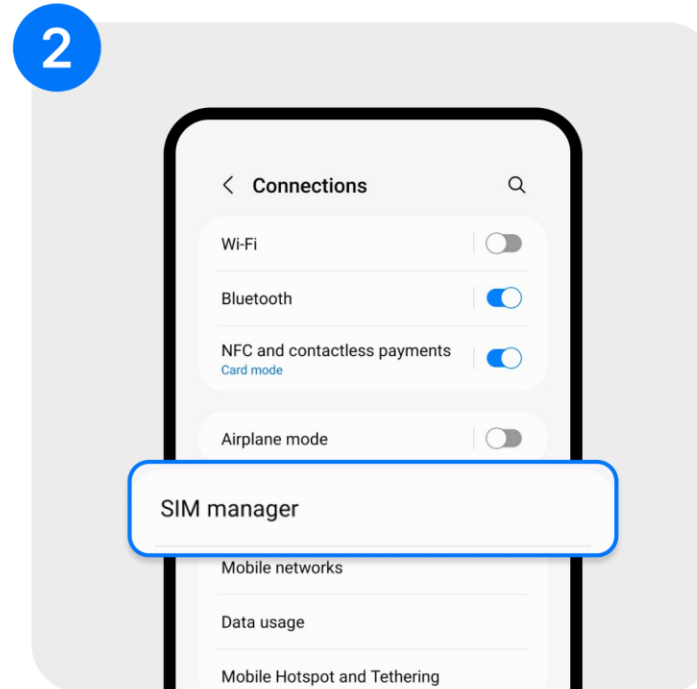
How to login eSIM

Android

- How do i scan to login eSIM

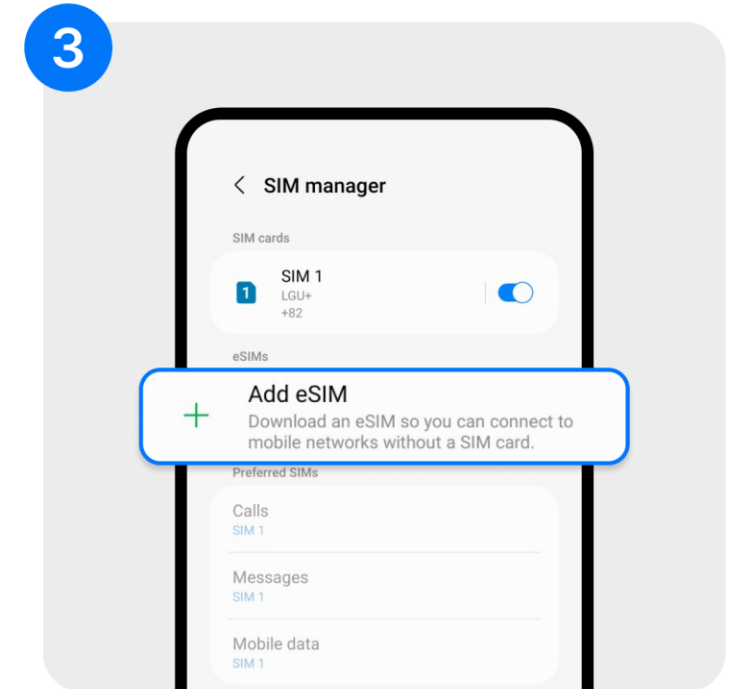


1. Settings → Click on the **Connections** button



2. Click on the **SIM manager** below.

Or click on the **SIM card management tools**.



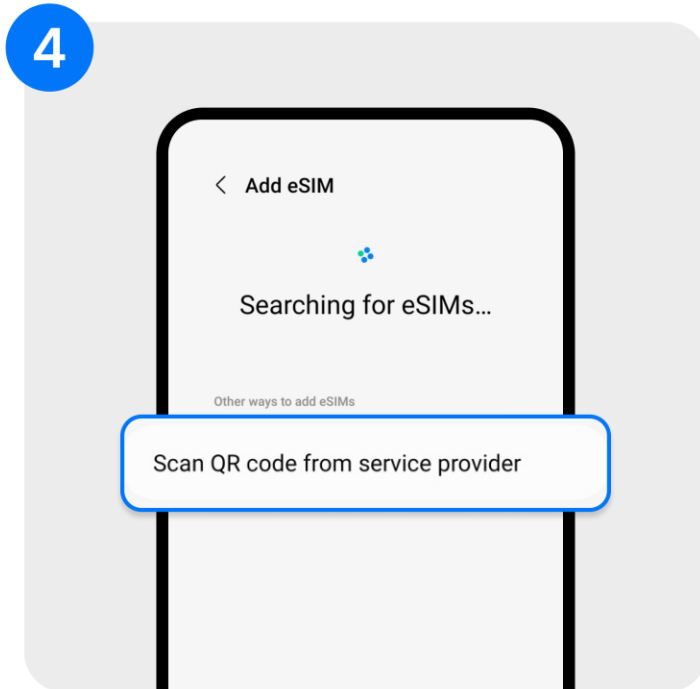
3. Click the **Add eSIM** button

🤔 **Is it different from image 3?**

If the screen above is different from the screen number three, it will appear when you **upgrade to Android 13.ver**. If not, click the Add eSIM button. However, it is **recommended to upgrade to the latest version of Android**.

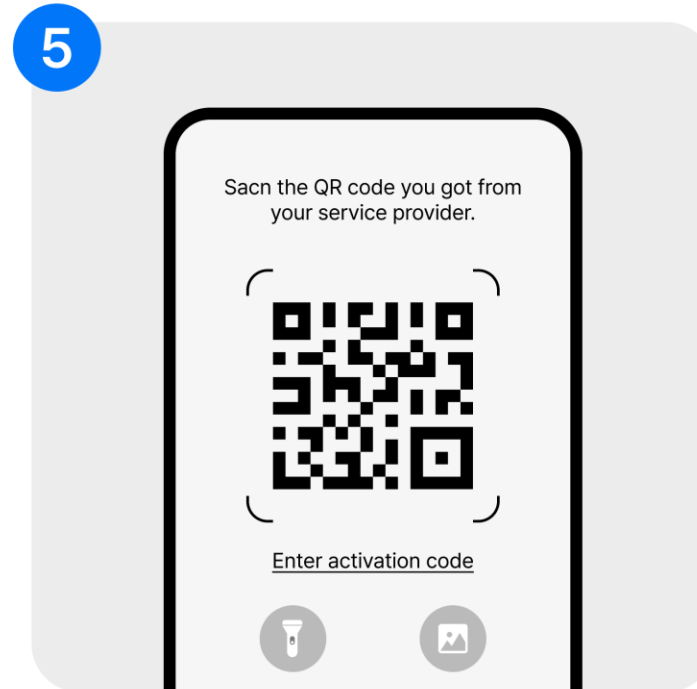
Android

- How do i scan to login eSIM



4. Click to [Scan QR code from service provider](#)

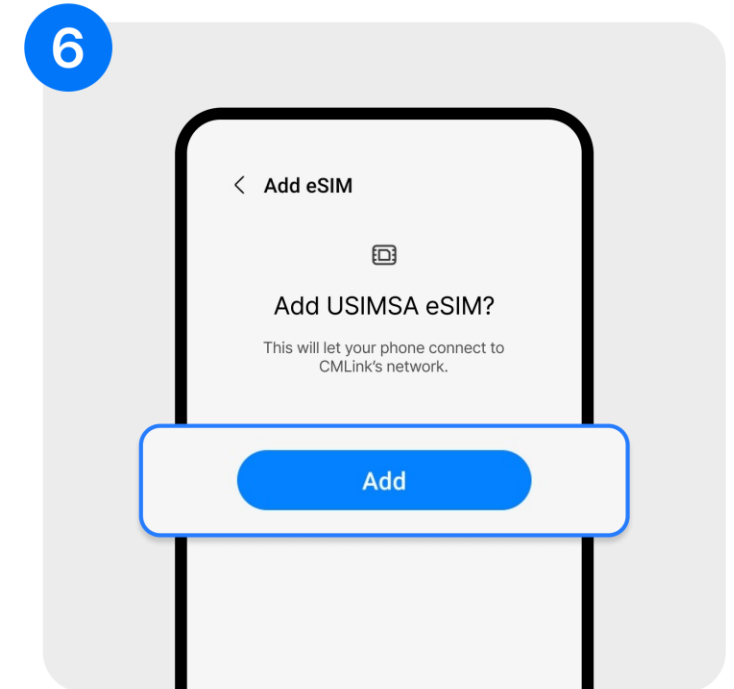
Or click to [scan the QR code from the telecom company](#)



5. Scan the [QR code](#)

! If it's hard to scan QR codes?

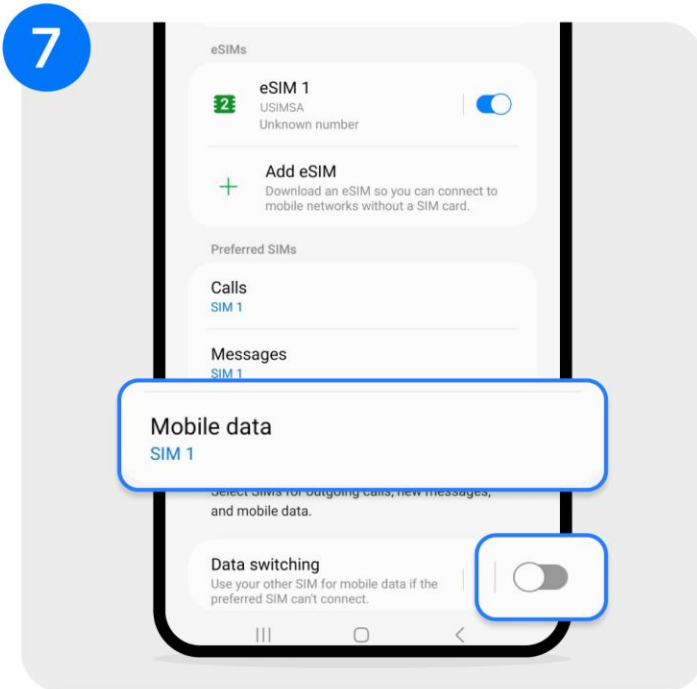
Click at the bottom of the relevant screen to [enter the activation code or open code](#). If you want to manual input, please go to [page 6](#) for manual input instructions. Also, if you want to scan the QR code, please go to [page 9](#).



6. Click the [Add](#) button to load.

Android

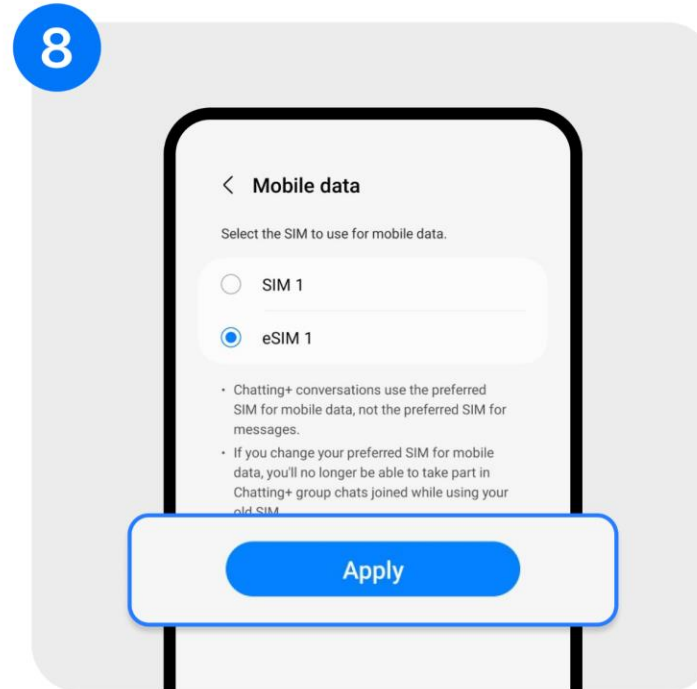
- How do i scan to login eSIM



7. Click the **Mobile Data** button below

🤔 Why is the Data switching set to OFF?

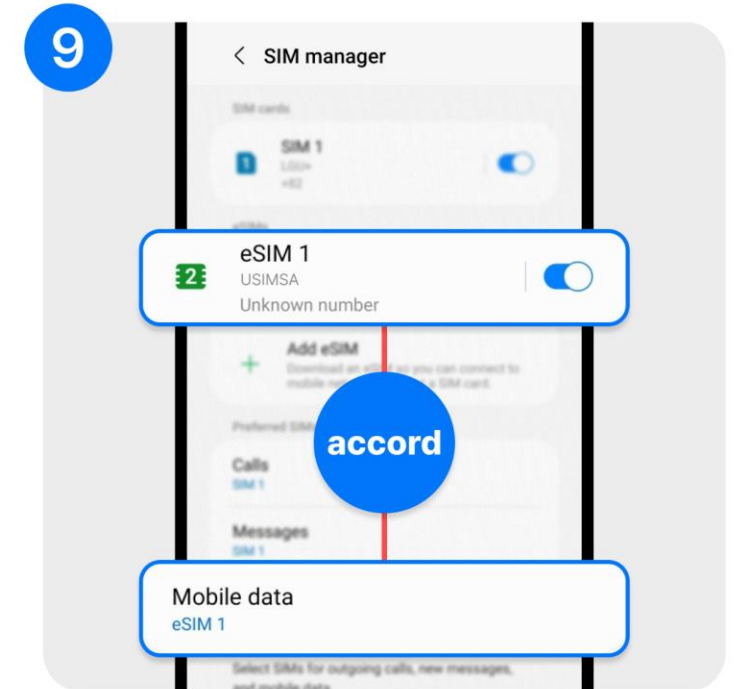
Data conversion must be set to OFF in order not to use baseline SIM (basic carrier) data and not incur costs for data usage.



8. Select **eSIM1** and click **Apply** → Return

📞 How do I check the call /text message from my home country?

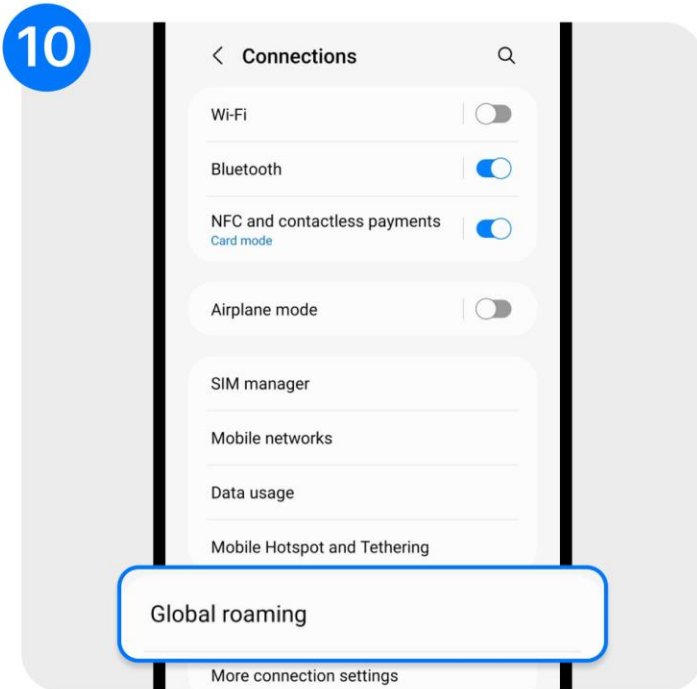
If you look at the screen of image 9 above, if you set SIM1 for calls and messages, it will be confirmed as a call or text message coming from your home country. However, there may be charges for receiving and sending letters. So please do! Use the data phone (Facebook, WeChat, etc.) to contact your friends!



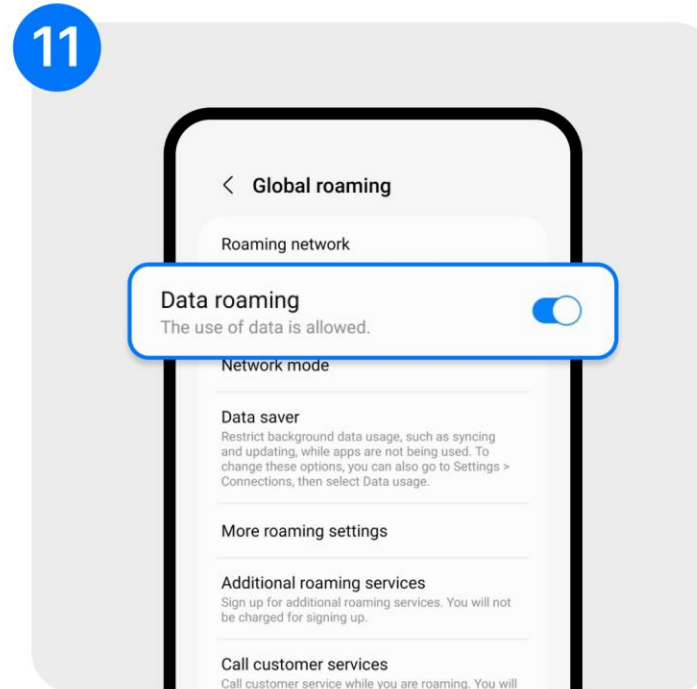
9. After confirming the consistency between the two sides → Return.

Android

- How do i scan to login eSIM

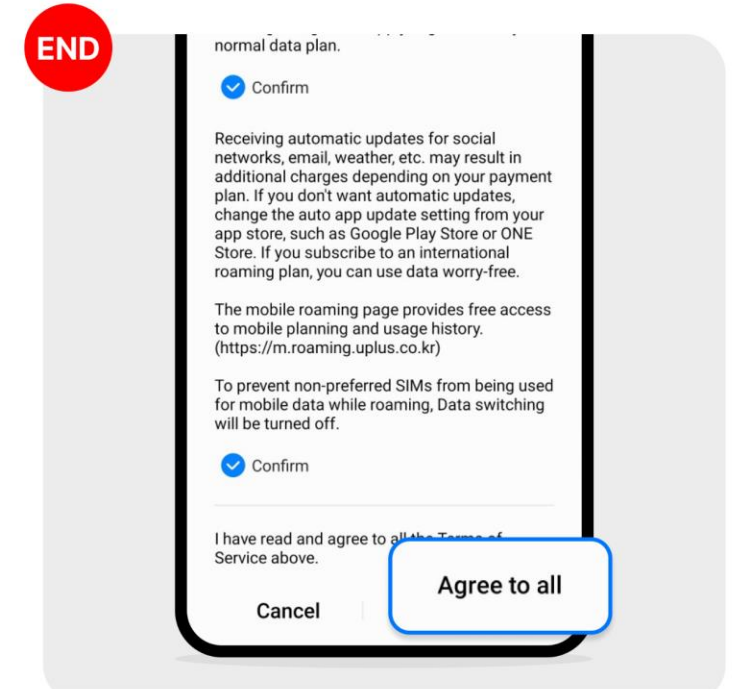


10. Click the **Global Roaming** button



11. Set **Data Roaming Use for On**

or Set **Data Roaming** for On



12. Click **Agree to All** → eSIM setup is completed!



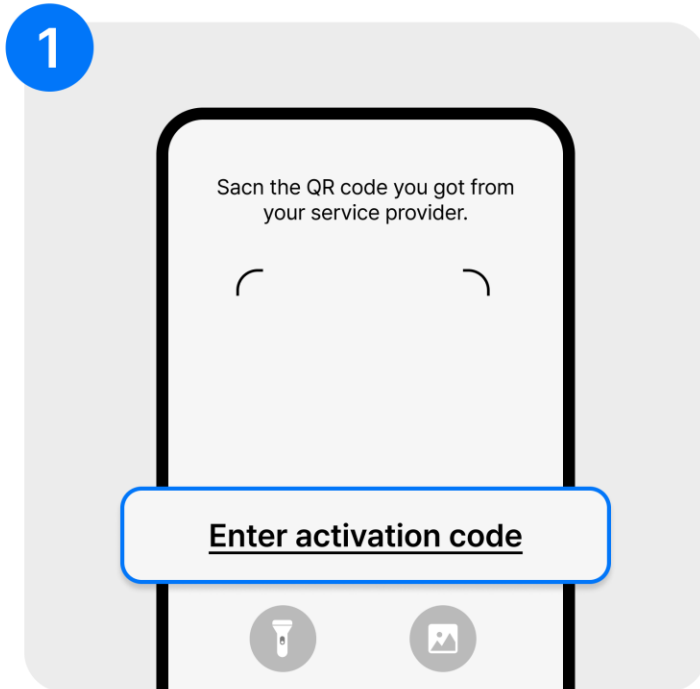
Android

- How to login eSIM manually

How to login eSIM manually

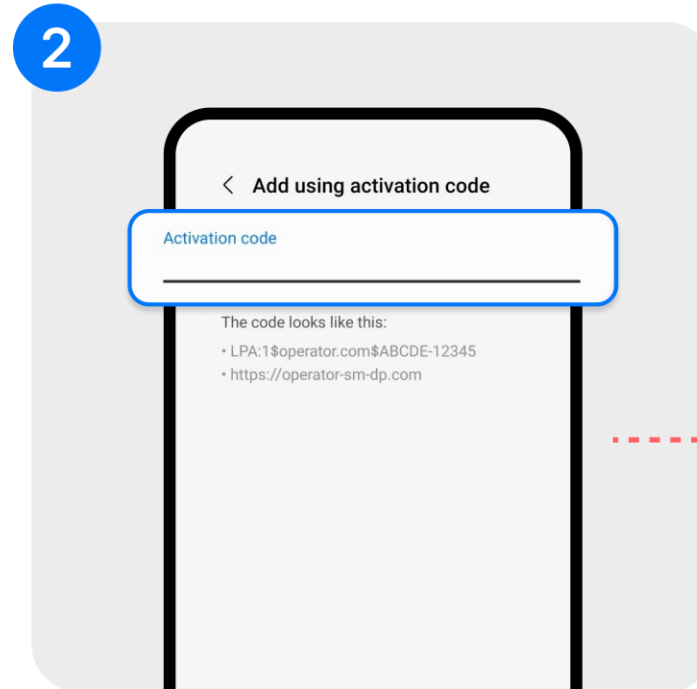
Android

- How to login eSIM manually



1. Click to **enter activation code**

or click to **enter the opening code**

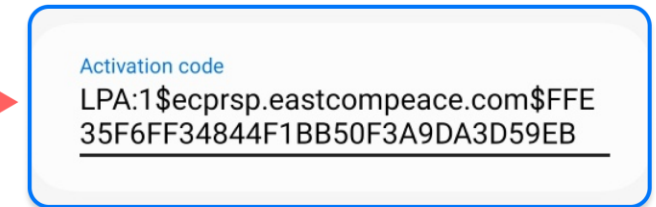


2. Enter **Activation Code** → Click on the **Connect**

Where is the enable code?

The enable code is in the Android section **below the QR code in the mail voucher** you received. Please **copy the enable code** and enter it.

The manual login method is shown below!



Just copy the top enable code and click the button below.
Manual connection is complete!

Android

- How to login the eSIM for self-service QR scanning

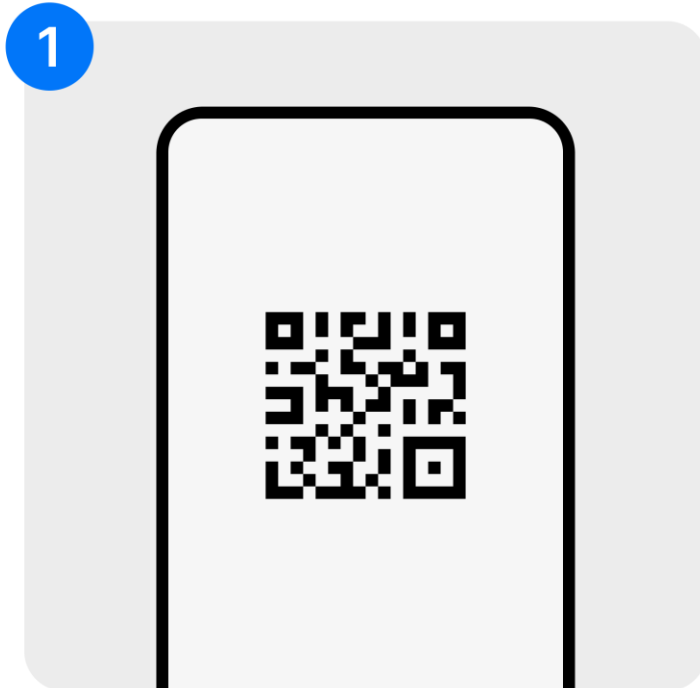
**Now you only need to use a
mobile phone to scan
without printing!**

**Please! Make sure to capture
the QR code first.**

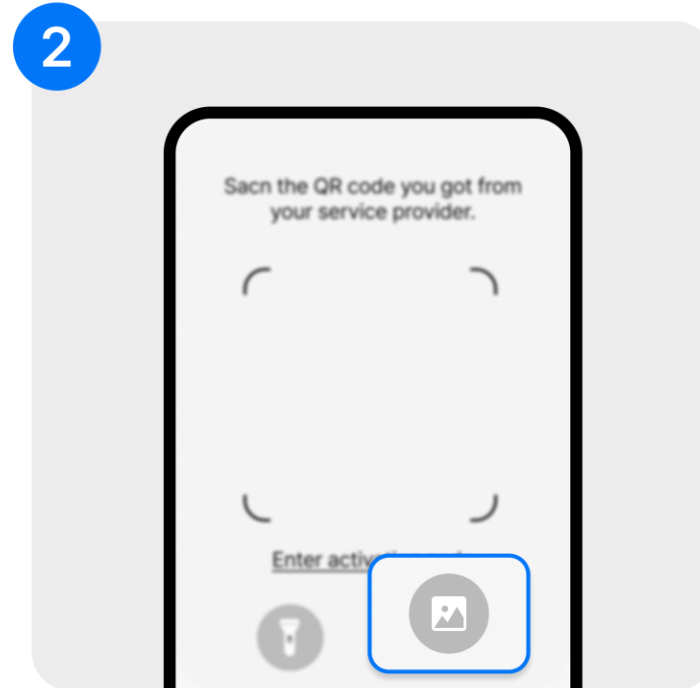
Please [capture the the QR code](#)
in the mail voucher you received in advance.

Android

- How to login the eSIM for self-service QR scanning



1. QR code received for capture



2. Click on the picture chart and select the QR code that has been captured

Where can I find this picture?

When you go - Settings →
SIM Card Management → Add eSIM →
Click on Scan the QR code you got
from your service provider,
You could see that on the top screen



Self-service QR scanning
Done!

Android

- 13 ver (New)

If that still doesn't work.
What should I do? 🥲

Don't worry!

Please check [the bottom of the email voucher you received!](#)

[PDF of obstacles coping measures!](#)

If this doesn't work, please contact USIMSA [24-hour customer service.](#)